



A DRINKER'S GUIDE TO DOWNTOWN L.A.

Gentrification has breathed life into what used to be an after-dark ghost town of skyscrapers and vacant theaters.

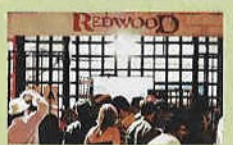
—MATTHEW BELLONI

For a city with such predictably good weather, L.A. has surprisingly few patio bars. **J Lounge** has ten thousand square feet of cabanas and sweeping views of the downtown skyline. (1119 South Olive Street; 213-746-7746)



A lounge with seventy-foot ceilings, **the Edison** is dug into the bowels of an old power plant. A boiler dominates the main room. (108 West Second Street; 213-613-0000)

The glowing red decor inside the hundred-year-old building housing **La Cita** feels lifted from a Robert Rodriguez movie (or the other way around). Saturdays and Sundays feature the rancho music that's been played for decades here on a small stage surrounded by vinyl booths. On Thursdays, the hipsters take over. (336 South Hill Street; 213-687-7111)



The divey **Redwood** still maintains a direct phone line to the *Los Angeles Times* city desk across the street, but a nautical-themed makeover and new sound system for the backroom dance floor makes for an eclectic crowd. (316 West Second Street; 213-680-2600)



The stylishly dim **Golden Gopher** has a liquor license so old, it permits takeout sales—meaning you can stop in for a martini at the bar and pick up a six-pack at the liquor stand on your way out. (417 West Eighth Street; 213-614-8001)



The Broadway Bar has a Liberace-esque circular bar and a staircase that leads to a balcony overlooking dozens of shuttered theaters. (830 South Broadway; 213-614-9909)

A former cop-and-troublemaker bar has recently been redone as **Bordello** in honor of the upstairs brothel that burned away more than eighty years ago. Weekend burlesque shows. (901 East First Street; 213-687-3766)

The Latino trannies at **Bar 107** have been replaced by a postcollege crowd, but the deer heads, Schlitz memorabilia, and five-dollar PBR-tallboy special remain. (107 West Fourth Street; 213-625-7382)

